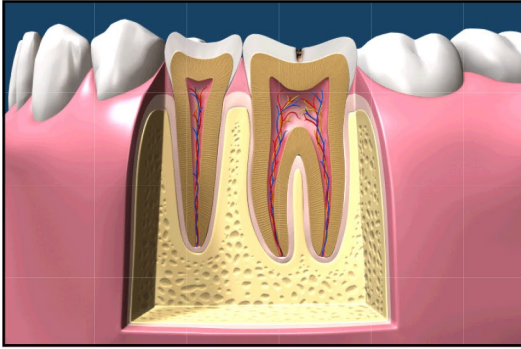
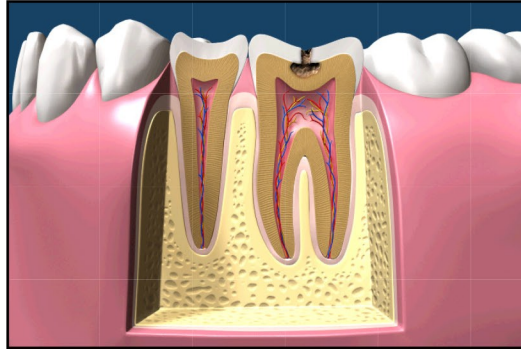


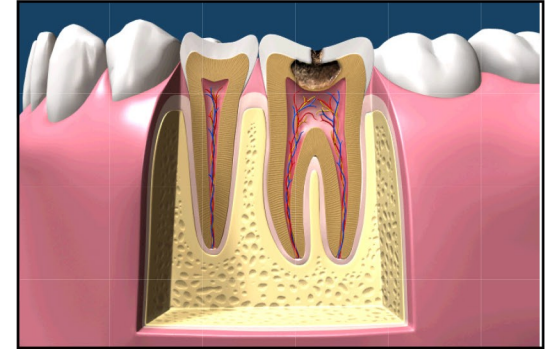
Cavity Progression



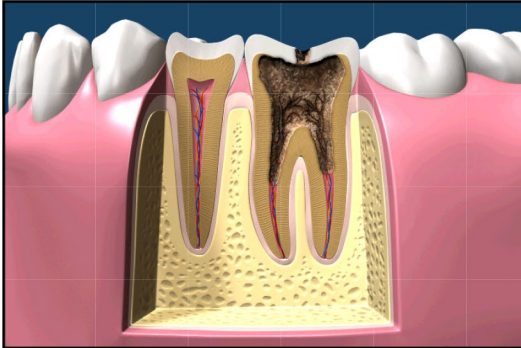
1) Here we have a cavity that has destroyed a part of the tooth. If the cavity is not treated, it will continue to grow.



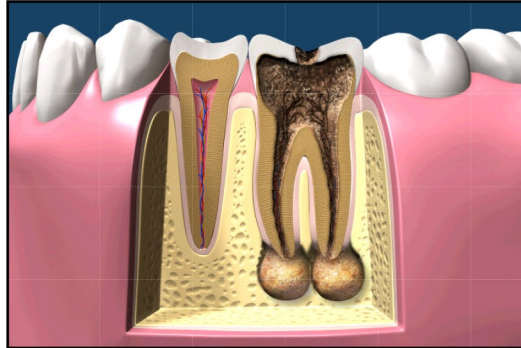
2) Once the cavity breaks through the enamel, it spreads quickly if left untreated.



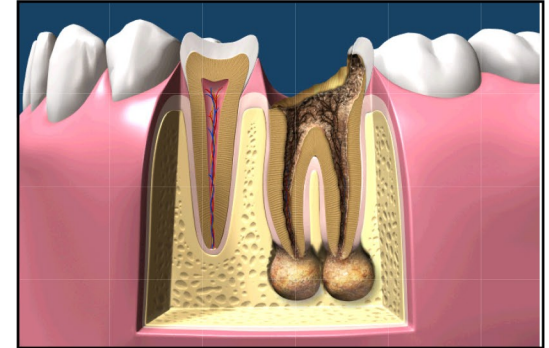
3) If the cavity is close to the pulp, where the nerves and blood vessels are, the tooth will become increasingly sensitive.



4) Once the cavity has reached the pulp area, it quickly spreads through the tissues and the tooth may become 'dead'



5) If left untreated, the destruction will continue beyond the root area and into the bone tissue. This may become an infection, abscess or cyst.



6) The tooth destruction continues throughout all parts of the tooth, and can undermine important areas, causing the tooth to fracture.